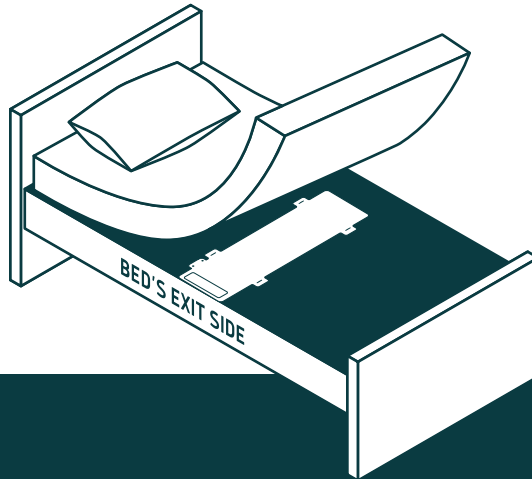




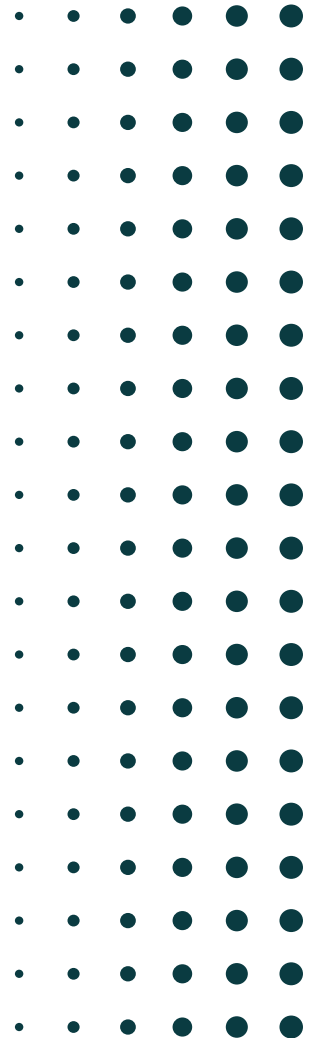
LUNDERG®

QUICK SETUP GUIDE



Under Mattress Bed Alarm System

If you have any issue or question, contact
us directly at questions@lunderg.com



STEP 1

TURN ON THE MONITOR



Install batteries
and close cover
with screwdriver



Turn ON

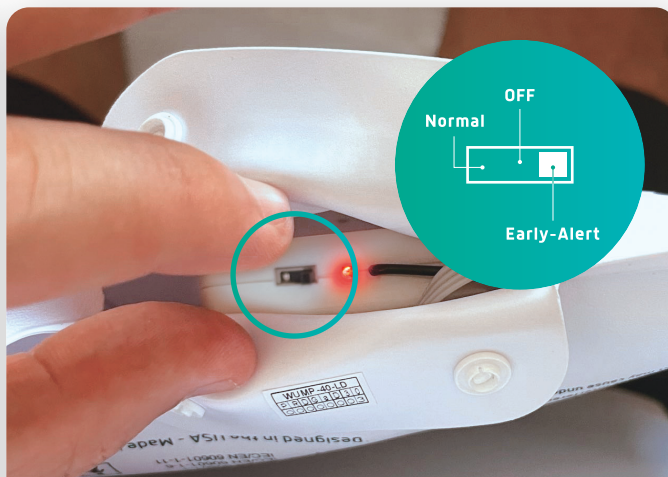
Bed pad & pager
come **pre-paired**
if purchased as
a set! If pairing
is required, hold
"PAIR" button
for 2-6 sec until
status light
turns STEADY
GREEN before
Step 2.

STEP 2

TURN ON THE PAD



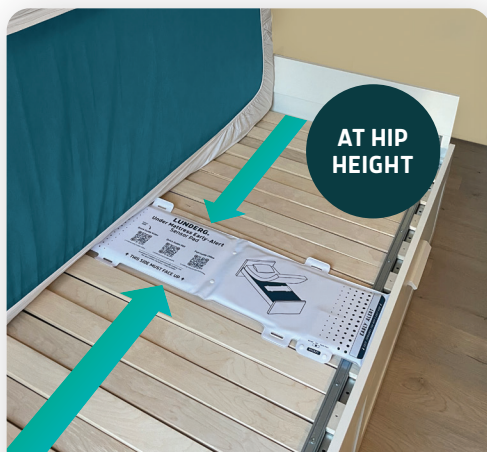
Locate pocket on the
bed pad & open it



Set to Early-Alert (right)
and close pocket. Pad will
start beeping!

STEP 3

PAD PLACEMENT



Place bed pad under mattress (Early-Alert side to the edge)



Place mattress down & wait until pad stops beeping (10 sec to 2 min depending on mattress)

If pad was not placed before it stopped beeping, turn OFF bed pad, then ON (right) and repeat this step.

STEP 4

TESTING



Lay down on
the bed



Sit on the edge of
the bed and then
exit bed



ALARM MUST SOUND

Cancel alarm by
FIRMLY pressing
"STOP" button



If Alarm didn't sound, switch OFF bed pad first,
then go back to step 1, and PAIR the device.

READY

THE SYSTEM IS **READY TO USE**

This is just a quick guide to get you started. To unlock the full potential of your system, please read the user manual and check the full instructional video!



Full Guide Video
www.Lunderg.com/underfullvideo

SUPPORT

QUESTIONS?



Contact us at
questions@lunderg.com

We will reply you within
24 hours, 7 days a week!

LUNDERG®



LUNDERG®

Lunderg.com